

◆ FOR LEASE ◆

Avli on Atlantic, Calgary, Alberta

AVLI
ON ATLANTIC



PROPERTY INFORMATION

LOCATION

1020 9th Avenue SE

REDEVELOPMENT SITE

7 storey residential building with 64 residential units.

AVAILABLE FOR LEASE

Five retail units from **1,085** sq. ft. to **2,584** sq. ft.
Mezzanines also available.

AVAILABLE

Immediately

LEASE RATE / ADDITIONAL RENT

Market / Estimate \$15.50 / sq. ft.

CEILING HEIGHT

Up to 19' +/-

PARKING

Abundant street parking. 15 reserved commercial stalls,
8 visitor stalls from 8:00am - 6:00pm on weekdays.

DEMOGRAPHICS

POPULATION

2018

2KM RING	3KM RING	5 KM RING
32,251	72,707	194,686

NUMBER OF HOUSEHOLDS

2018

2KM RING	3KM RING	5KM RING
17,642	40,019	97,312

AVERAGE HOUSEHOLD INCOME

2018

1KM RING	3KM RING	5KM RING
\$101,635	\$121,655	\$129,764

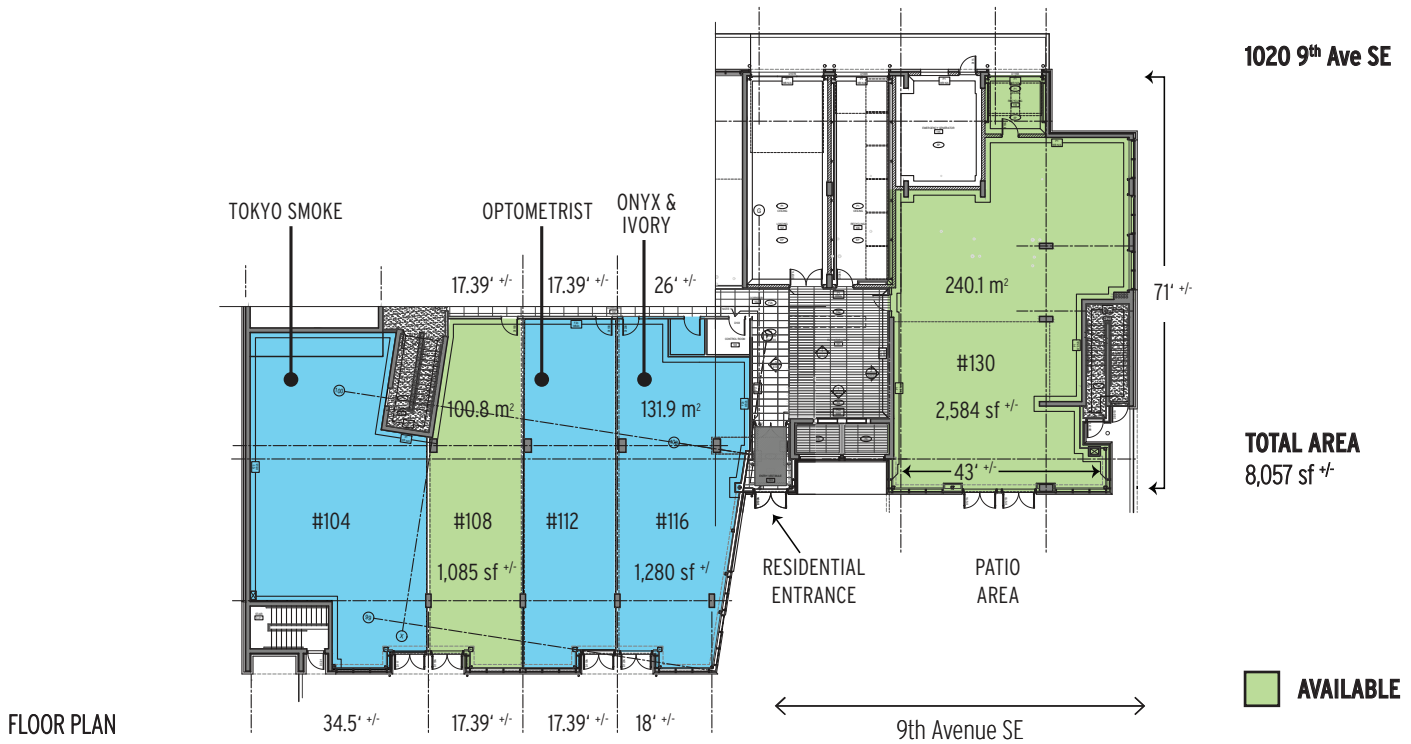


jrmercantile.com

JR
MERCANTILE
REAL ESTATE ADVISORS INC

Jeff Robson • jeff@jrmercantile.com
403 770 3071 ext 200

Bruce Levy • bruce@jrmercantile.com
403 770 3071 ext 201



jrmercantile.com

JR
MERCANTILE
REAL ESTATE ADVISORS INC

Jeff Robson • jeff@jrmercantile.com
403 770 3071 ext 200

Bruce Levy • bruce@jrmercantile.com
403 770 3071 ext 201

The information contained herein has been gathered from sources deemed reliable, but is not warranted as such and does not form any part of any future contract. This offering may be altered or withdrawn at any time without notice.